

# School Annual Report 2021

Darlington Primary School



# School Overview

Darlington Primary School has a long tradition of providing a quality education to students from Kindergarten to Year 6. Key features of our school include the early learning centre for students in Kindergarten and Pre-primary; our magnificent amphitheatre; and our classroom and lunch shed which is recognised by the National Trust as having historical significance. Our new school motto of 'Resilience, Initiative, Integrity and Care' is regularly demonstrated in the actions of our students who achieve well both academically and socially.

Our staff are experienced and dedicated, and collaborate and focus on student improvement through the use of evidence-based, reflective practices and an informed and targeted approach to learning. Our support staff and pastoral care programs support our students' academic, social and emotional needs. We work with students identified as at risk through a team approach that involves our school, families and outside agencies, as required.

Our specialist programs in the arts, music and visual arts, Italian and physical education ensure our students receive a well-rounded education.

Excelling students are identified and supported and take part in programs such as PEAC, the Kalamunda Extension Program and the School of Instrumental Music. We enjoy partnerships with other schools in the community, working together to provide academic and sporting opportunities. Students participate in a variety of supplementary programs including interschool sport carnivals, science and spelling competitions, public speaking and arts exhibitions.

Many students have followed their parents and grandparents in attending our school. Students come from families where learning and education are highly valued and there is strong community feel. All staff work closely with our parents, who volunteer and assist in a range of activities throughout the year. The school enjoys the support and involvement of a well-informed and pro-active School Council and a committed P&C.





# Student Numbers and Characteristics

Primary	Kin	PPR	Y01	Y02	Y03	Y04	Y05	Y06	Total
Full Time	(18)	39	52	52	43	52	50	51	357
Part Time	36								

Note: The Kin Full Time student figure represents the Full Time Equivalent of the Part Time students

Semester 2	2017	2018	2019	2020	2021
Primary (Excluding Kin)	344	341	332	353	339

Student numbers have remained stable, with more students leaving in Year 6 than are replaced in Kindergarten. This means that the school population will slightly decrease over the next few years.

## Staff

	No	FTE
<b>Administration Staff</b>		
Principals	1	1.0
Associate / Deputy / Vice Principals	1	1.0
Total Administration Staff	2	2.0
<b>Teaching Staff</b>		
Other Teaching Staff	23	18.4
Total Teaching Staff	23	18.4
<b>School Support Staff</b>		
Clerical / Administrative	3	2.0
Gardening / Maintenance	2	1.0
Other Non-Teaching Staff	12	7.3
Total School Support Staff	17	10.3
<b>Total</b>	<b>42</b>	<b>30.7</b>

The retention of staff remains high as Darlington Primary School remains a school of choice for staff. Mrs Bycroft, Arts Specialist teacher, retired at the end of 2021 after teaching at the school for 28 years. The school staffs five specialist programs (Music, Italian, Physical Education, Art and Science).

Teaching Staff at Darlington Primary School are all registered with the Teacher Registration Board and all staff have a current Working with Children Check. Audits are completed regularly to ensure compliance with the Education department's requirements with Professional Learning regarding Child Protection, Ethical Decision Making, Record Keeping and Asbestos Awareness Training. Staff at Darlington Primary School have access to and participate in school-based Professional Learning as well as Learning offered by the Education Department and third party providers. Professional Learning in 2021 included *Talk for Writing* by DSF, Brightpath, *Letters and Sounds*, Child Protection, Inquiry-based Learning and *You Can Do It* program.

Staff at Darlington Primary School remain committed and focused on the prime task of caring pastorally for all students.

# Student Attendance

## Primary Attendance Rates

	Attendance Rate	
	School	WA Public Schools
2018	94.8%	92.6%
2019	94.7%	91.6%
2020	94.8%	91.9%

## Attendance % - Primary Year Levels

	Attendance Rate						
	PPR	Y01	Y02	Y03	Y04	Y05	Y06
2018	94%	95%	95%	95%	95%	96%	94%
2019	94%	95%	95%	95%	95%	95%	95%
2020	95%	95%	95%	95%	95%	94%	95%
WA Public Schools 2020	91%	92%	92%	92%	92%	92%	92%

## Note

The 2020 attendance rates have excluded Week 7-10 of Term 1.



Attendance remains strong as most students like attending school and have supportive parents and carers. A handful of students cope with a range of family and personal issues which impacts on their attendance. The school remains proactive in working with each of these students and their families.

Non-attendance is managed by the classroom teacher in monitoring unauthorised absences. This is also monitored by the Deputy Principal, who manages individual cases. Where multiple issues need to be addressed, the Student Services team (School Psychologist and Chaplain) are proactively included in the intervention strategies.



# Student Achievement and Progress

## NAPLAN

Percentages of students Above, At, and Below National Minimum Standard Levels

NAPLAN National Minimum Standard (NMS)	NAPLAN - Numeracy							
	2018			2019			2021	
	Year 3	Year 5	Year 7	Year 3	Year 5	Year 7	Year 3	Year 5
Above NMS	96%	93%		92%	94%		100%	92%
At NMS	4%	7%		6%	6%		0%	8%
Below NMS	0%	0%		2%	0%		0%	0%

Percentages may not add up to 100% due to rounding.

School Performance in comparison with all WA Public Schools

NAPLAN	NAPLAN - Numeracy							
	2018			2019			2021	
	Year 3	Year 5	Year 7	Year 3	Year 5	Year 7	Year 3	Year 5
Comparative Performance								

	Below Expected performance in comparison to the results of all other WA public schools
	Expected performance in comparison to the results of all other WA public schools
	Above Expected performance in comparison to the results of all other WA public schools
	No data available or number of students is less than 6 or the Socio-Economic Index is under review

Percentages of students Above, At, and Below National Minimum Standard Levels

NAPLAN National Minimum Standard (NMS)	NAPLAN - Reading							
	2018			2019			2021	
	Year 3	Year 5	Year 7	Year 3	Year 5	Year 7	Year 3	Year 5
Above NMS	91%	86%		96%	94%		98%	98%
At NMS	7%	11%		2%	6%		2%	2%
Below NMS	2%	2%		2%	0%		0%	0%

Percentages may not add up to 100% due to rounding.

School Performance in comparison with all WA Public Schools

NAPLAN	NAPLAN - Reading							
	2018			2019			2021	
	Year 3	Year 5	Year 7	Year 3	Year 5	Year 7	Year 3	Year 5
Comparative Performance								

Percentages of students Above, At, and Below National Minimum Standard Levels

NAPLAN National Minimum Standard (NMS)	NAPLAN - Writing								
	2018			2019			2021		
	Year 3	Year 5	Year 7	Year 3	Year 5	Year 7	Year 3	Year 5	Year 7
Above NMS	91%	83%		100%	79%		100%	90%	
At NMS	4%	12%		0%	17%		0%	10%	
Below NMS	4%	5%		0%	4%		0%	0%	

Percentages may not add up to 100% due to rounding.

School Performance in comparison with all WA Public Schools

NAPLAN	NAPLAN - Writing								
	2018			2019			2021		
	Year 3	Year 5	Year 7	Year 3	Year 5	Year 7	Year 3	Year 5	Year 7
Comparative Performance									

Percentages of students Above, At, and Below National Minimum Standard Levels

NAPLAN National Minimum Standard (NMS)	NAPLAN - Spelling								
	2018			2019			2021		
	Year 3	Year 5	Year 7	Year 3	Year 5	Year 7	Year 3	Year 5	Year 7
Above NMS	94%	81%		92%	90%		93%	92%	
At NMS	6%	19%		8%	10%		5%	8%	
Below NMS	0%	0%		0%	0%		2%	0%	

Percentages may not add up to 100% due to rounding.

School Performance in comparison with all WA Public Schools

NAPLAN	NAPLAN - Spelling								
	2018			2019			2021		
	Year 3	Year 5	Year 7	Year 3	Year 5	Year 7	Year 3	Year 5	Year 7
Comparative Performance									

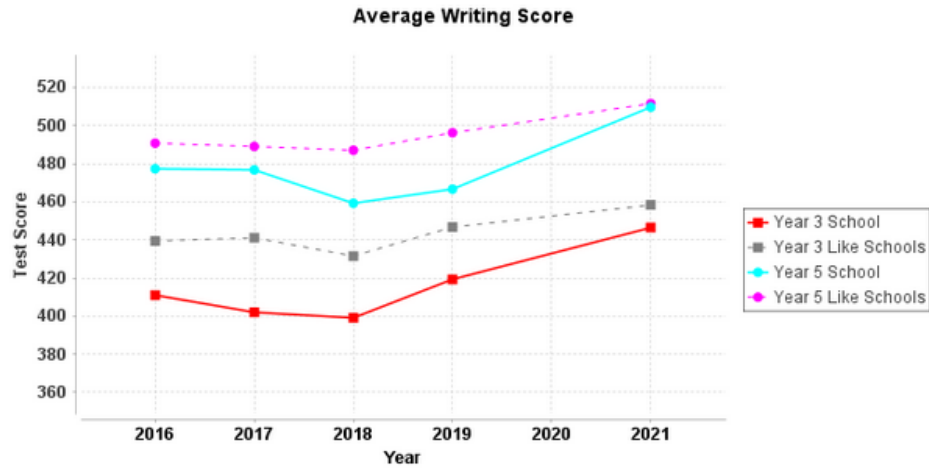
Percentages of students Above, At, and Below National Minimum Standard Levels

NAPLAN National Minimum Standard (NMS)	NAPLAN - Grammar & Punctuation								
	2018			2019			2021		
	Year 3	Year 5	Year 7	Year 3	Year 5	Year 7	Year 3	Year 5	Year 7
Above NMS	87%	98%		96%	92%		100%	92%	
At NMS	6%	2%		4%	8%		0%	6%	
Below NMS	6%	0%		0%	0%		0%	2%	

Percentages may not add up to 100% due to rounding.

School Performance in comparison with all WA Public Schools

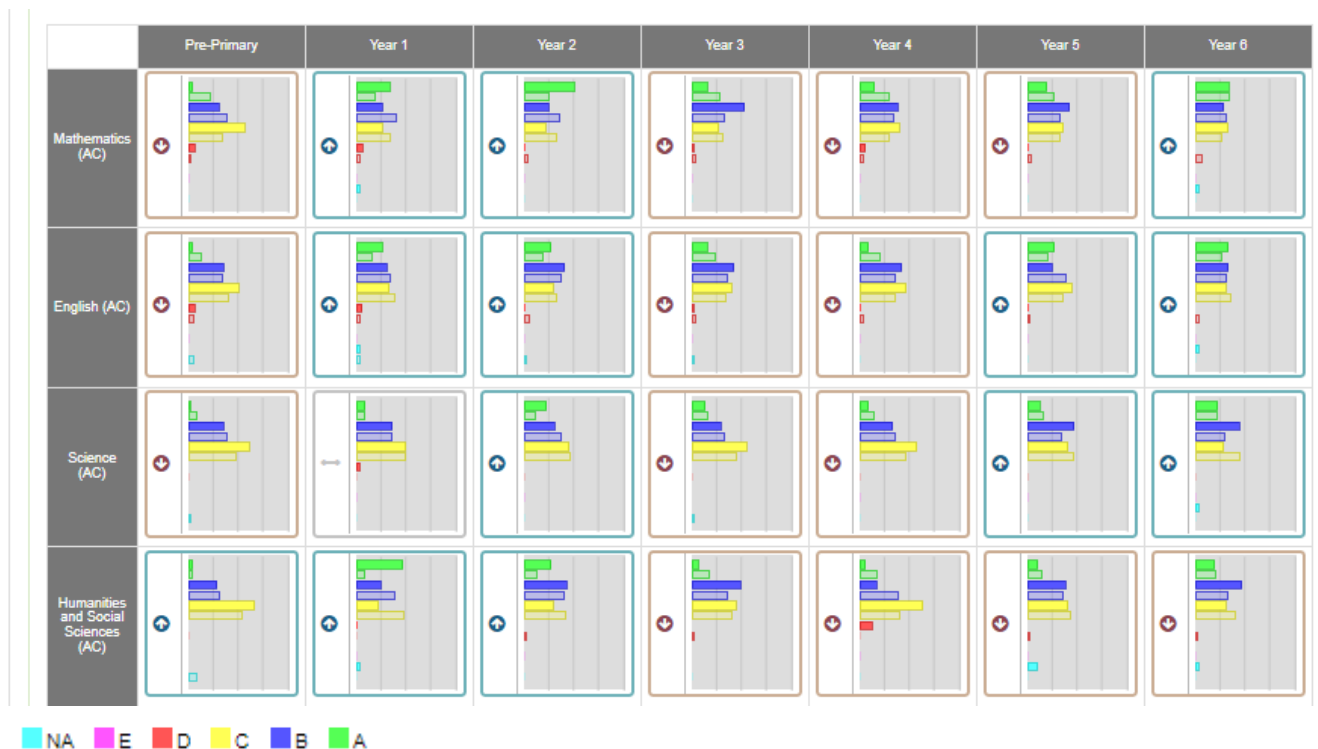
NAPLAN	NAPLAN - Grammar & Punctuation								
	2018			2019			2021		
	Year 3	Year 5	Year 7	Year 3	Year 5	Year 7	Year 3	Year 5	Year 7
Comparative Performance									



This data is very encouraging to see the affect that the Talk for Writing program is having of student writing. We are significantly closing the gap in comparison to like schools.

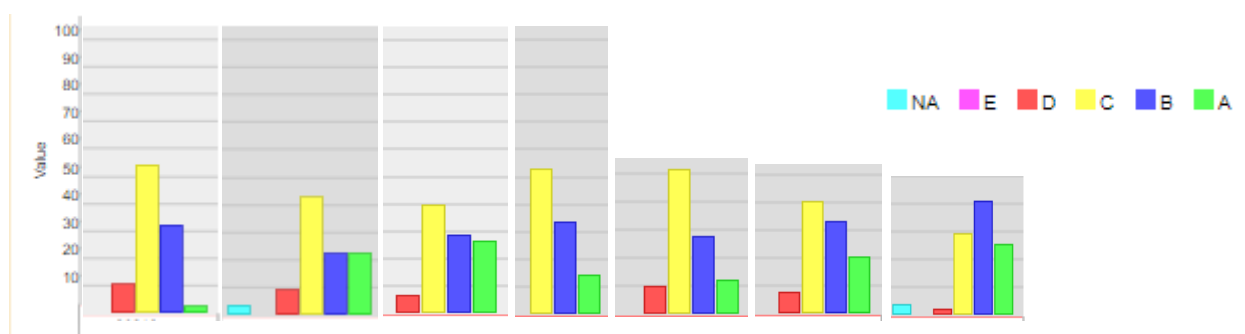
## Student Semester 2 Report Grades

This data gives a summary of student performance across the year levels in the four core Learning Areas of Maths, English, Science and HASS. The arrows indicate whether the school performance is above or below that of like schools.



## Writing

Preprimary to Year 6 Report Ratings Semester 2 2021



# Strategic Plan Priorities

## Writing

- A *Talk for Writing* trainer worked with each teacher to review Term 4 plans.
- Writing team working on scope and sequence for developing vocabulary and sentence structure.
- All new teachers have attended the 2 day *Talk for Writing* training.
- Writing team working on standardising *Talk for Writing* delivery across the school.
- Writing Coordinator for Junior and Senior Primary teams resourced with time.
- *Brightpath* assessment has been completed, with a moderating collaborative session completed with teachers from Glen Forrest Primary School. In 2022, *Brightpath* will have good comparative data to show student progress.
- The data, as seen above from Student Semester 2 Reports and NAPLAN, indicates a positive trend to students being assessed as better writers. In particular, the NAPLAN data shows this school closing the gap between the performance of Like Schools and Darlington Primary School.

## Inquiry

The Darlington Primary School Inquiry model was refined and implemented in all classrooms. All classes had at least one successful Inquiry Unit completed. Many classes had some form of presentation as a part of their unit.

## Health

- *You Can Do It* curriculum was delivered in all classes in 2021. Four lessons per term were chosen by the teacher catering for the needs of each year level. Professional Learning was delivered to staff as a refresher by a *You Can Do It* team member.
- The use of the Child Protection Curriculum from Child Safety Services

## Sustainability

- The Sustainability team progressed the shade house and garden bed project. The garden beds are now in use. Seeds have been propagated and the seedlings are growing.
- *Containers for Change* program was implemented with each class becoming a receival point.
- Wax wraps were made by all students.
- Recycling of paper and cardboard continued. A bin for other recycled materials has been made available.



# Post-Primary School Destination

Year 6 graduates enrolled in the following schools.

SCHOOL	NUMBER OF STUDENTS
KSHS	26
Mundaring Christian College	8
La Salle	7
Mazenod	3
Helena College	2 (Moved over for Year 6)
Bob Hawke College	1
John Curtin	1
Harvey SHS	1
Seaton Catholic College	1
Governor Stirling	1
Unknown	1



# Satisfaction with the school

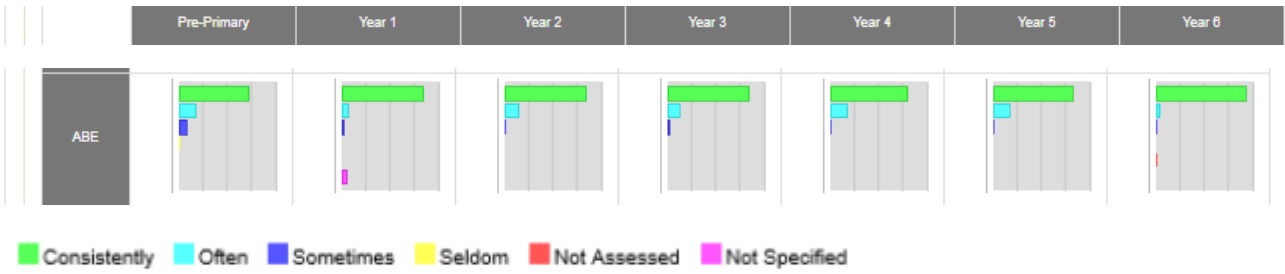
## Staff

Feedback gained through a survey, email and anecdotal means indicates that staff are generally satisfied with the school. Staff retention remains high and collaboration is growing.

## Students

Students generally display a happy disposition while at school. Students smile, skip and show kindness to each other. They are engaged in their learning and are eager to please their teachers. Students generally make positive decisions and show great connection and satisfaction with their school.

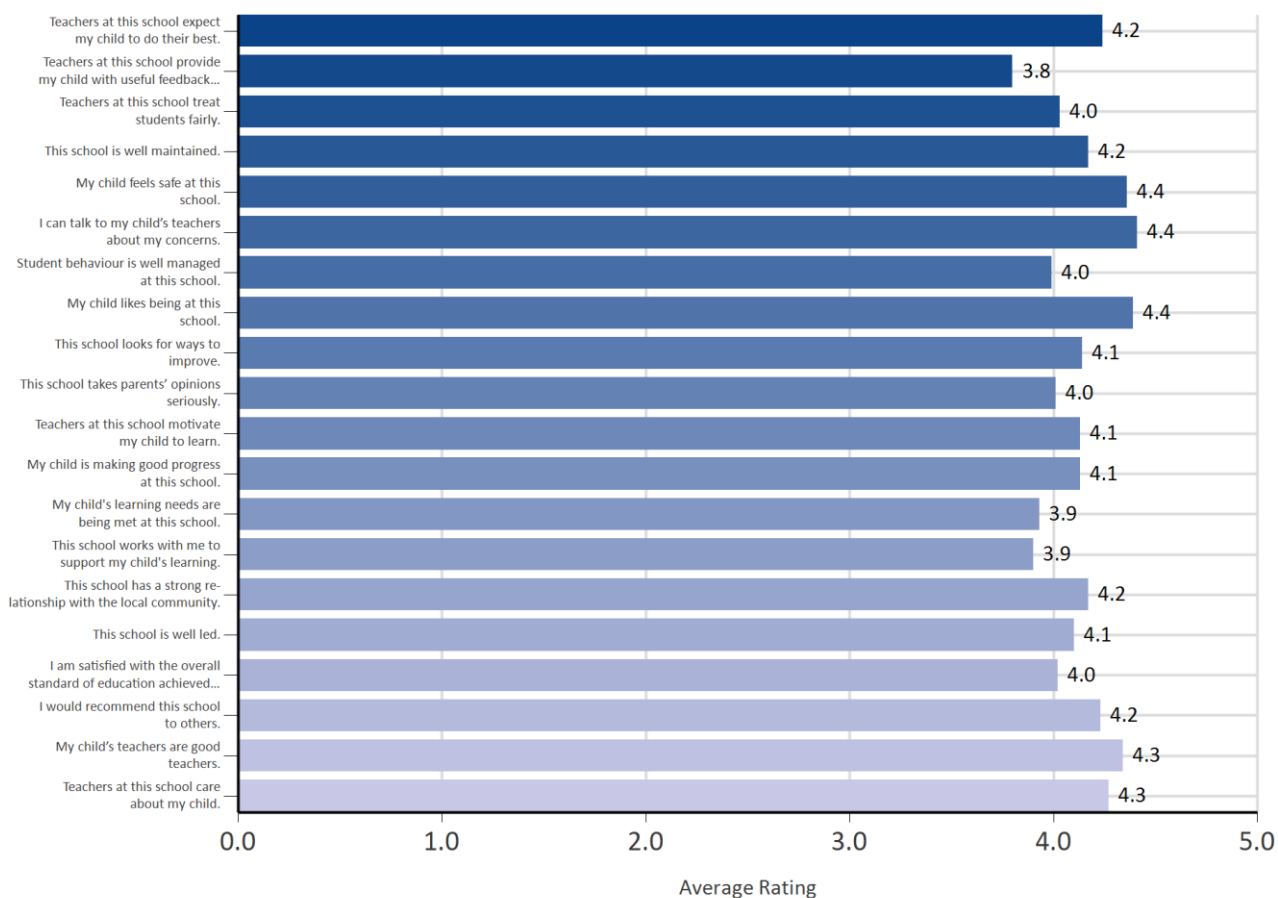
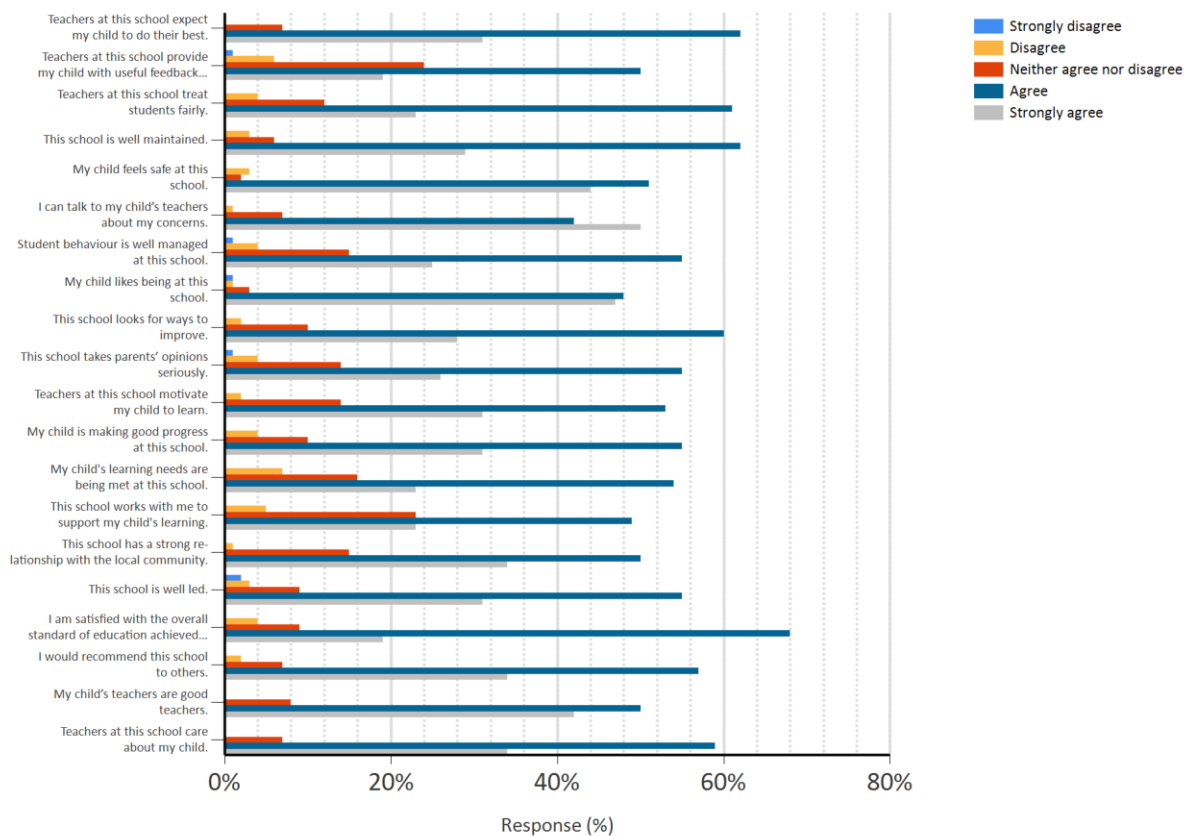
Below is the Semester 2 Student Report data from the Attitude, Behaviour and Effort ratings, which imply a positive connection with school and a high level of satisfaction.



## Parents

Parents were invited to give the school feedback in Term 3 using the National School Survey tool. The survey was offered online and 100 parents responded. There was a good spread across all year levels with the most respondents from parents of students in Years 1, 2 and 4 and the least respondents from parents of students in Preprimary.







	2017	2021	Variance
N of Respondents	76	100	
<b>Item No</b>			
1 Expect the best	4.4	4.2	-0.2
2 Useful Feedback	3.9	3.8	-0.1
3	4.0	4.0	0
4	4.1	4.2	+0.1
5	4.4	4.4	0
6	4.3	4.4	+0.1
7	3.9	4.0	+0.1
8	4.4	4.4	0
9 School improve	3.6	4.1	+0.5
10 Parent feedback	3.5	4.0	+0.5
11	3.9	4.1	+0.2
12 Making progress	3.8	4.1	+0.3
13	3.7	3.9	+0.2
14	3.8	3.9	+0.1
15	-	4.2	-
16	-	4.1	-
17	-	4.0	-
18	-	4.2	-
19	-	4.3	-
20	-	4.3	-

Rating	Score
Strongly agree	5
Agree	4
Neither agree nor disagree	3
Disagree	2
Strongly disagree	1

Anecdotal feedback from survey:

44 respondents made a response. 75% of comments made were expressing a negative point-of-view.

- Inconsistency amongst teaching staff was noted.
- Homework not given was noted.
- More (consistent) communication between home and school was requested.

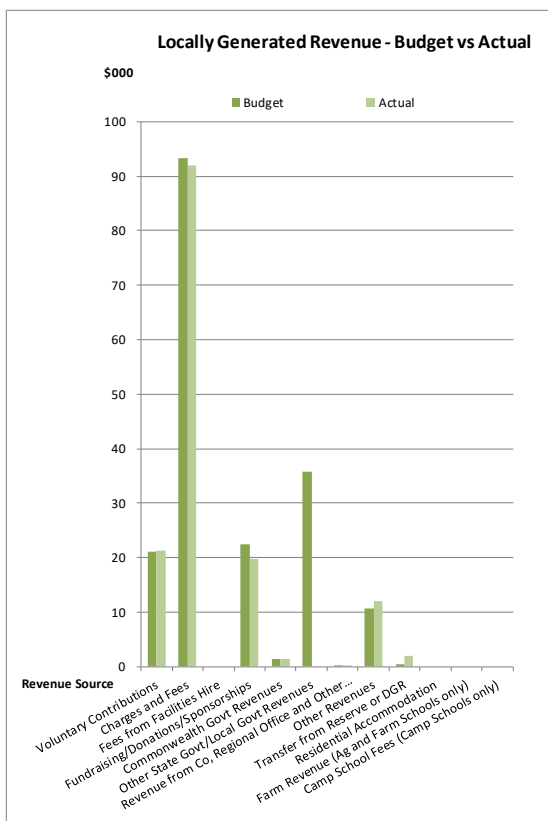
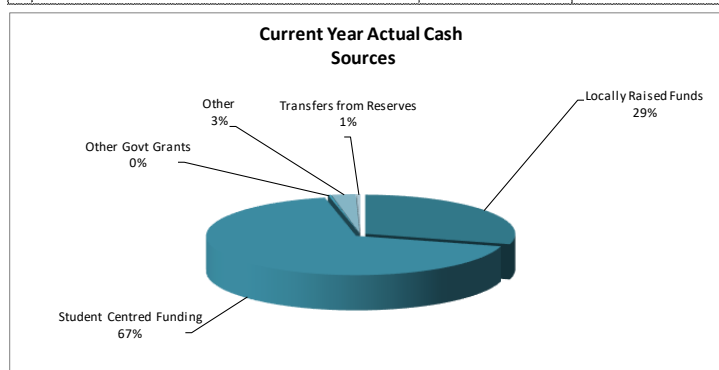
Parent responses are slightly more positive compared to the previous survey in 2017. The average response lifted from 3.98 to 4.11, indicating a more satisfied cohort of parents.



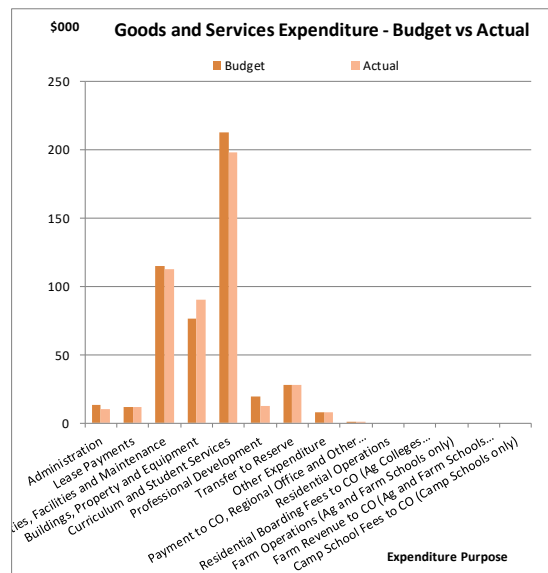
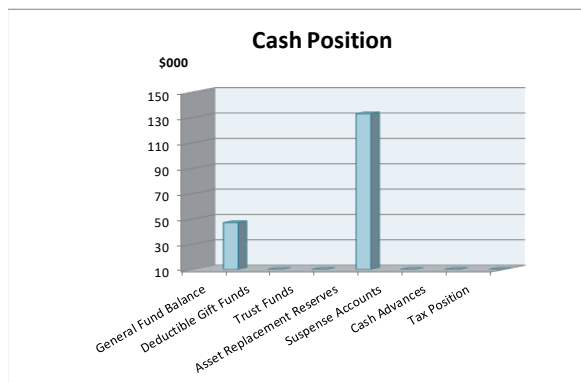


# School Financial Summary

	Revenue - Cash & Salary Allocation	Budget	Actual
1	Voluntary Contributions	\$ 21,023.00	\$ 21,272.50
2	Charges and Fees	\$ 93,300.00	\$ 92,041.56
3	Fees from Facilities Hire	\$ -	\$ -
4	Fundraising/Donations/Sponsorships	\$ 22,410.16	\$ 19,750.04
5	Commonwealth Govt Revenues	\$ 1,298.00	\$ 1,298.05
6	Other State Govt/Local Govt Revenues	\$ 35,710.00	\$ -
7	Revenue from Co, Regional Office and Other Schools	\$ 160.00	\$ 160.00
8	Other Revenues	\$ 10,662.20	\$ 11,905.92
9	Transfer from Reserve or DGR	\$ 406.00	\$ 1,906.00
10	Residential Accommodation	\$ -	\$ -
11	Farm Revenue (Ag and Farm Schools only)	\$ -	\$ -
12	Camp School Fees (Camp Schools only)	\$ -	\$ -
	<b>Total Locally Raised Funds</b>	<b>\$ 184,969.36</b>	<b>\$ 148,334.07</b>
	<b>Opening Balance</b>	<b>\$ 61,178.97</b>	<b>\$ 61,178.97</b>
	<b>Student Centred Funding</b>	<b>\$ 269,858.00</b>	<b>\$ 306,067.67</b>
	<b>Total Cash Funds Available</b>	<b>\$ 516,006.33</b>	<b>\$ 515,580.71</b>
	<b>Total Salary Allocation</b>	<b>\$ -</b>	<b>\$ -</b>
	<b>Total Funds Available</b>	<b>\$ 516,006.33</b>	<b>\$ 515,580.71</b>



	Expenditure - Cash and Salary	Budget	Actual
1	Administration	\$ 13,020.00	\$ 9,737.44
2	Lease Payments	\$ 11,379.00	\$ 11,168.64
3	Utilities, Facilities and Maintenance	\$ 114,817.50	\$ 112,675.41
4	Buildings, Property and Equipment	\$ 76,442.00	\$ 89,722.27
5	Curriculum and Student Services	\$ 212,318.00	\$ 197,368.57
6	Professional Development	\$ 19,000.00	\$ 12,152.70
7	Transfer to Reserve	\$ 28,045.00	\$ 28,045.00
8	Other Expenditure	\$ 7,500.00	\$ 7,393.50
9	Payment to CO, Regional Office and Other Schools	\$ 500.00	\$ 450.00
10	Residential Operations	\$ -	\$ -
11	Residential Boarding Fees to CO (Ag Colleges only)	\$ -	\$ -
12	Farm Operations (Ag and Farm Schools only)	\$ -	\$ -
13	Farm Revenue to CO (Ag and Farm Schools only)	\$ -	\$ -
14	Camp School Fees to CO (Camp Schools only)	\$ -	\$ -
	<b>Total Goods and Services Expenditure</b>	<b>\$ 483,021.50</b>	<b>\$ 468,713.53</b>
	<b>Total Forecast Salary Expenditure</b>	<b>\$ -</b>	<b>\$ -</b>
	<b>Total Expenditure</b>	<b>\$ 483,021.50</b>	<b>\$ 468,713.53</b>
	<b>Cash Budget Variance</b>	<b>\$ 32,984.83</b>	



<b>Cash Position as at:</b>	
<b>Bank Balance</b>	<b>\$ 182,138.12</b>
<b>Made up of:</b>	
1 General Fund Balance	\$ 46,867.18
2 Deductible Gift Funds	\$ -
3 Trust Funds	\$ -
4 Asset Replacement Reserves	\$ 132,774.83
5 Suspense Accounts	\$ 6,467.11
6 Cash Advances	\$ -
7 Tax Position	\$ (3,971.00)
<b>Total Bank Balance</b>	<b>\$ 182,138.12</b>